



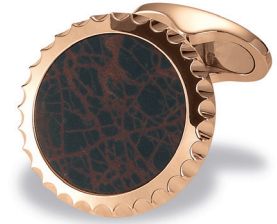
1866



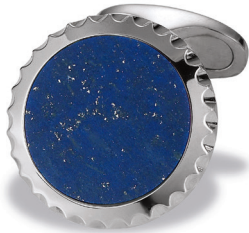
M 1866-13  
750/-GG, pol.  
Lapis



M 1866-10  
750/-RG, pol.  
Onyx matt



M 1866-16  
750/-RG, pol.  
Eisenkiesel



M 1866-29  
750/-WG, pol.  
Lapis



M 1866-31  
750/-RG, pol.  
Onyx matt  
60 Dia. à 0.005 ct, G, VS



M 1866-2  
750/-WG, pol.  
Ferrid